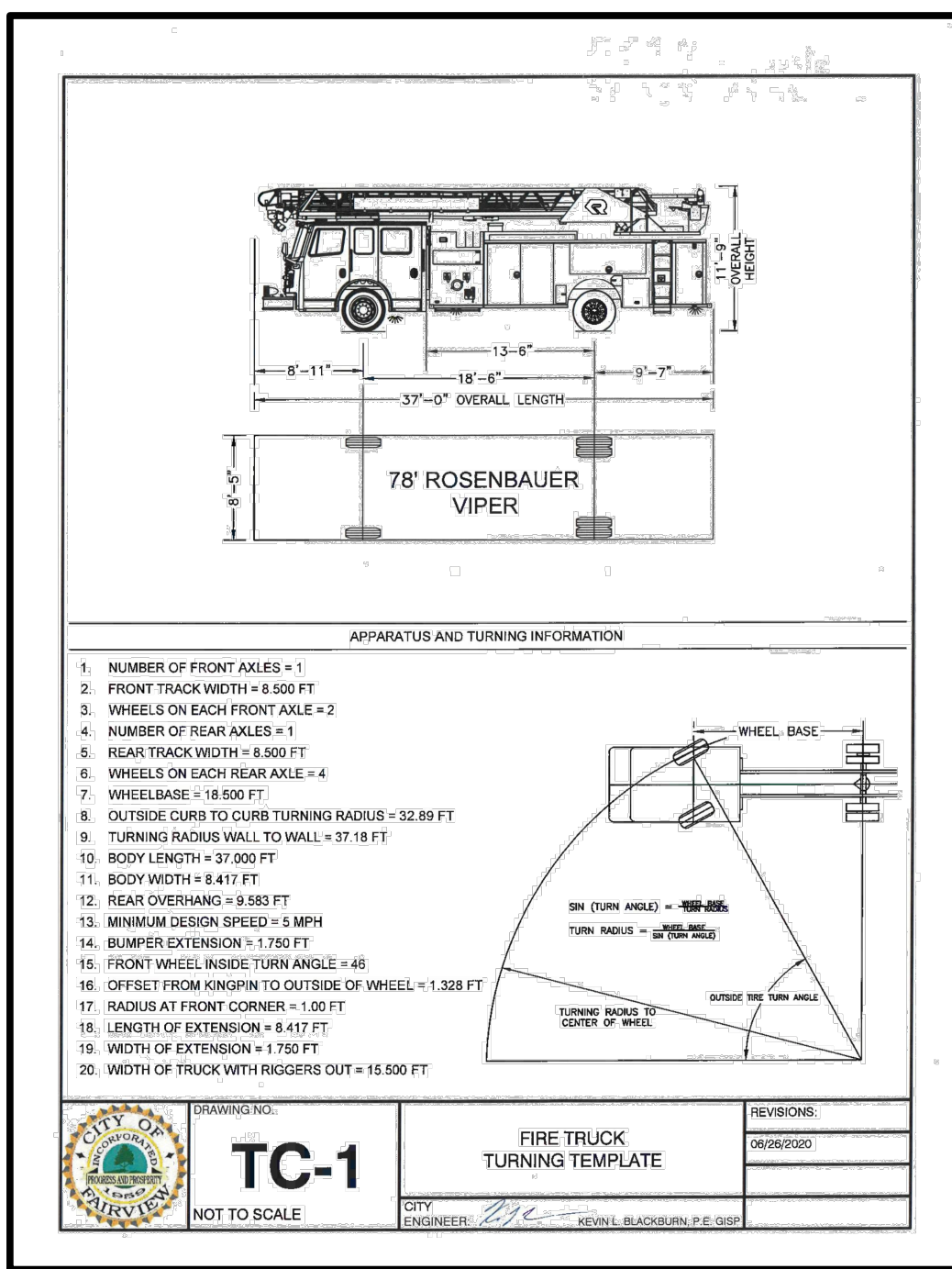
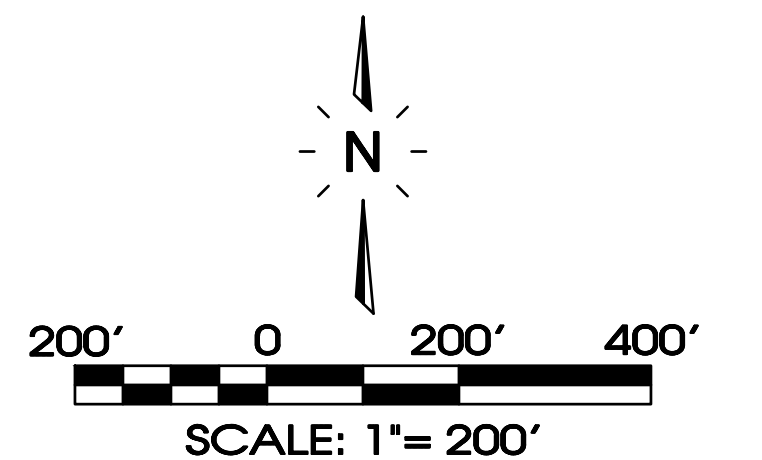


Legend:			
□	EXIST. CONCRETE MONUMENT	□	INLET PROTECTION FILTER
●	IRON PIN SET (I.P.S.)	♿	HANDICAP PARKING SYMBOL
○	IRON PIN FOUND (I.P.F.)	⊖	HC SIGN
+	EXIST. SIGN POST	—	HEADWALL
○	EXIST. SEWER CLEANOUT	—	WINGED HEADWALL
○	EXIST. MANHOLE (SEWER & PHONE)	○	MANHOLE
⊖	EXIST. CATCH BASIN (STORM SEWER)	63.25 ×	PROPOSED SPOT ELEVATION
⊖	EXIST. WATER/GAS VALVE	(63.25) ×	EXIST. SPOT ELEVATION
⊖	EXIST. TELEPHONE RISER	⊖	POST INDICATOR VALVE
⊖	EXIST. GAS RISER	⊖	REDUCER
⊖	ELECTRICAL ENCLOSURE	⊖	REMOTE FIRE DEPT. CONNECTION
⊖	EXIST. WATER METER	⊖	REVISION NUMBER
⊖	EXIST. UTILITY POLE	⊖	RIP RAP
⊖	EXIST. FIRE HYDRANT	→	RUNOFF FLOW ARROW
⊖	BENCHMARK	→	SEWER/STORM FLOW DIRECTION
⊖	BLOW OFF VALVE	→	TRAFFIC ARROW
•	CONCRETE BOLLARD	→	TURN LANE ARROWS
⊖	CATCH BASIN	V.A.	VAN ACCESSIBLE HANDICAP DESIGNATION
⊖	CURB INLET	⊖	WATER METER
⊖	AREA DRAIN	⊖	WHEEL STOP
⊖	CONCRETE THRUST BLOCK	⊖	GREASE TRAP
⊖	DOUBLE DETECTOR CHECK VALVE	#1	DRAINAGE STRUCTURE DESIGNATION
⊖	FIRE DEPT. CONNECTION	#1	DRAINAGE PIPE DESIGNATION
⊖	FIRE HYDRANT	⊖	CONCRETE SIDEWALK
⊖	GAS METER	⊖	EXTRUDED CURB
⊖	GATE VALVE & BOX	⊖	CURB & GUTTER
⊖	EXTERIOR CLEANOUT	⊖	CONCRETE SWALE
⊖	CHECK VALVE	⊖	
⊖	EXISTING PHONE	—	PH
⊖	EXISTING ELECTRIC	—	OH
⊖	PROPERTY LINE	—	
⊖	EASEMENTS	—	
⊖	RIGHT OF WAY	—	ROW
⊖	EROSION CONTROL SILT FENCE	—	SF SF
⊖	EXISTING TREELINE	—	
⊖	EXISTING FENCELINE	—	X X X X
⊖	MINIMUM BUILDING SETBACK LINE	—	
⊖	PHASE BOUNDARY	—	
⊖	EXISTING GAS LINE	—	GAS
⊖	PROPOSED GAS LINE	—	GAS
⊖	EXISTING STORM	—	STM STM
⊖	PROPOSED STORM	—	STM STM
⊖	EXISTING CONTOUR LINES	—	601
⊖	PROPOSED CONTOUR LINES	—	601
⊖	EXISTING SANITARY SEWER	—	SS SS
⊖	PROPOSED SANITARY SEWER	—	SS SS
⊖	EXISTING WATER	—	W W
⊖	PROPOSED WATER	—	W W



SEC, Inc.
ENGINEERING • SURVEYING • LAND PLANNING
LANDSCAPE ARCHITECTURE

REVIEW SET
(Not intended for construction)

Aden Woods Section 3
Fairview, Tennessee

Master Plan

C0.2

850 MIDDLE TENNESSEE BOULEVARD
MURFREESBORO, TENNESSEE 37129
PHONE: (615) 890-7901 E-MAIL: MTAYLOR@SEC-CIVIL.COM FAX: (615) 895-2567
NO PORTION OF THIS DRAWING MAY BE REPRODUCED WITHOUT THE EXPRESSED WRITTEN CONSENT OF SEC, INC.
COPYRIGHT SEC, INC., 2021

REVISED: 08-05-2021; Staff Comments #1
08-31-2021; Staff Comments #2
09-28-2021; Staff Comments #3

DRAWN: CFB3, SJA
DATE: 5-7-2021
CHECKED:
MAT
FILE NAME:
2005BAdenWoods3
SCALE:
1" = 200'
JOB NO.
20058
SHEET:

WADC Representative _____ Date _____